

A wireframe hand, rendered in a blue and white grid pattern, is shown pointing towards the left. The hand is positioned on the right side of the image, with the index finger extended towards the text. The background is a gradient of blue and white, featuring horizontal lines of binary code (0s and 1s) and a large, curved blue line that arches over the top of the text.

Starbuck

Pocket PC Phone

What's in the Box?



Front, Top, and Left Side View

Power Button / Backlight

Press to turn on / off your Pocket PC Phone or backlight.

Notification LED

See description on next page.

Contacts

Press for quick access to your Contacts.

Record

Press to record a voice note.

Volume

Press up/down to adjust the volume of your device.

Camera

Press to launch camera capture utility.
Press again to take a picture.

Soft Reset

Press into the hole with the stylus to reset your device.

Send

Press to take an incoming call, or press to dial a number.

Microphone

Speak here when receiving / making a phone call or voice recording.

MMC/SD cards or SDIO accessories slot

Insert either MMC/SD cards or SDIO accessories in this slot.

Infrared port

Enables you to exchange file(s) or data with other devices without cables/ wires.

Speaker

Listen to audio media or a phone call from here.

Calendar

Press for quick access to the Calendar.

Touch Screen

For handwriting, drawing or to make a selection with the stylus.

End

Press to end a call.

Navigation Pad

Press Up, Down, Left, or Right to move through menus, fields, etc. Select by pressing the Action button in the center. When in the Dialer screen, press Left once to access the Speed Dial feature, or press Right once to access the Call Log feature.

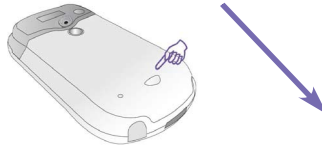


Back, Bottom, and Right Side View

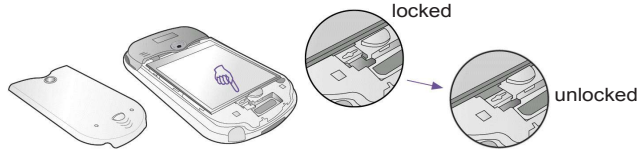


1. Inserting the SIM Card

1. Ensure that the device is turned off.
2. Turn your device over, press the “fixing lock” (indicated below), and slide the back cover off.

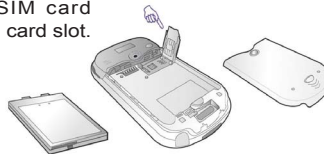


3. Push the **red** battery lock down, to release the battery pack. The battery can then easily be removed.



4. Insert the SIM card with its gold contacts face down. Its cut-off corner should match the cut-off corner in the slot. Push down lightly to snap it into place.

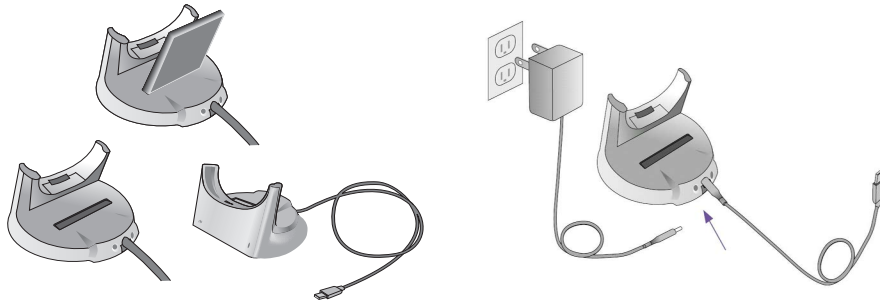
Slide the SIM card
into the SIM card slot.



5. Replace the battery, then push the **red** battery lock back up, to lock the battery into place.
6. Replace the cover: Slide it back on, then push down lightly at the bottom, to snap it securely into place.

2. Charging the Battery

Before you use your Pocket PC Phone for the first time, you must install the battery and completely charge the battery for at least 8 hours. You can then place it in the cradle for a short time each day to recharge it to its full capacity. It can be charged while powered on or off. A steady amber light in the LED on the top right of the device indicates charging. Solid green indicates fully charged. If you have a spare battery, you can also put your battery into the slot in the cradle for recharging, as shown on the left below. Refer to the LED light on the right side of the cradle for recharging notification. Alternatively, you can charge your Pocket PC Phone using the USB Sync cable while connected to the PC's USB port (see illustration on page after next).



Saving your data:

It is vital to keep your battery charged. Any new programs you install, and your data, are stored in RAM. If the battery completely drains, this data will be lost. Only the default programs on the device when you bought it will remain. To prevent this kind of data loss, a portion of the main battery will keep your data safe for about 72 hours if your device runs out of power. An additional battery, the backup battery, is designed to keep your data safe when you remove the main battery, for about 20 minutes. Make sure the backup battery has at least 50% power remaining, before you remove the main battery (Start menu > Settings > System > Power).

If the battery gets very low, your device screen displays a warning message. If this occurs, save any unsaved data you are working on, performing a synchronization with your PC or save it on your MMS/SD card, then turn your device off. Do not try to restart your device until you have connected to an external power supply.

3. Turning on your Pocket PC and making a call


Press the Power button to turn on your Pocket PC Phone. The first time it is turned on, the *Welcome Wizard* screen will appear. Follow the instructions and use the stylus to calibrate the screen. In the *Phone Dialer* screen, enter the PIN (Personal Identification Number) provided by your mobile operator, then tap **Enter**.

Making a phone call

Press the **Talk/Send** button, tap the numbers on the soft keypad you want to call, then tap the **Talk** button on the screen (shown at right, with the Smart Dialing interface). To end a call, tap **End**.

Making a call from Contacts

Your PC's Outlook Contacts information will be available on your Pocket PC Phone if you select the *Contacts* checkbox when synchronizing, as shown on the next page (**Tools Menu > Options... > Sync Options** in the ActiveSync window). To call a Contact directly:

- Tap  in the Command Bar at the bottom of the *Phone Dialer* screen to display the Contacts list. Select the Contact entry you want to call, then press the **Talk** button twice — once to send to the *Phone Dialer* screen, and once to call.
- You can also access your Contacts entries, and call them, using the included **Photo Contacts** utility. Select **Start menu > Programs > Photo Contacts**. Your Contacts will be listed in the *Caller ID* screen, in the "Contacts List View" by default. Press your stylus on the desired Contact entry, then select **Dial** from the pop-up menu to dial the number which is currently specified as the default phone number for that Contact. Or, you can select **Photo Dialer View** from the View menu, and from there dial any number associated with a Contact to whom you have already assigned a photo.

NOTE: You can use **Photo Contacts** to assign Photo ID's to your individual Contacts and to groups. Then, when a Contact calls you, his or her assigned Photo ID will display on your screen. See Chapter 3 of the User's Manual for more information.



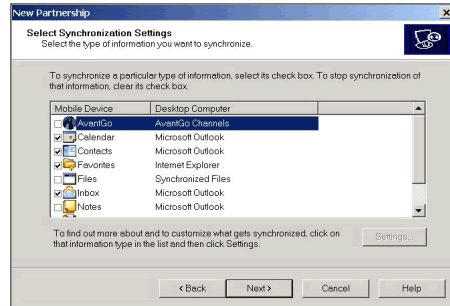
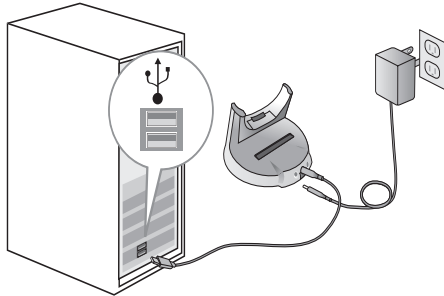
Tap to display your Pocket Contacts list.

4. Synchronizing with ActiveSync

Installing ActiveSync on your PC

Using ActiveSync, you can synchronize information on your desktop computer and/or an Exchange Server with the information on your Pocket PC Phone. ActiveSync is already installed on your Pocket PC Phone, but you need to install it on your desktop PC if you don't already have it.

Insert the Companion CD into the CD drive of your PC. Follow the instructions on the installation wizard screen to install ActiveSync. Once installation is completed, connect the Sync cable to the Pocket PC and plug it into your PC's USB port, shown in the illustration below on the left.



Setting up a partnership






Then dock your Pocket PC Phone in its cradle, and turn it on. When the desktop PC detects a USB connection, it will start the ActiveSync *New Partnership* setup wizard. Follow the instructions on the screen and select the items you want to be synchronized, shown in the illustration above on the right. Note that to prevent synchronization problems, it is important that you select **Synchronize with this desktop** in the New Partnership Wizard options. Data from the PC and the Pocket PC Phone will begin synchronizing once the new partnership has been created.

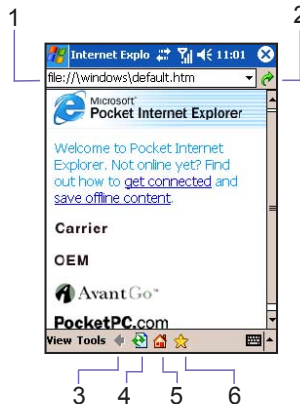
5. Surfing the Internet

You need to configure your Pocket PC Phone's data connection in order to surf the Internet, or to access web-based E-mail accounts. You can surf the Internet by connecting to a GPRS network connection on your device.

Using Internet Explorer

Select **Internet Explorer** from the Start menu.

1. In the Address Bar near the top of the screen, enter the Web address you want to connect to. (Tap the downward-pointing arrow at the right of the field to choose from previously entered addresses.)
2. Tap  to go to the web address you entered.
3. Tap  to go back to the previous page.
4. Tap  to refresh the web page on the screen.
5. Tap  to go back to the Home page.
6. Tap  (the **Favorites** button), then tap the item in the list that you want to view. To add a favorite link while using your Pocket PC, go to the page you want to add, tap and hold on the page, then select **Add to Favorites** from the pop-up menu.



6. Using the Camera and Album

Your Pocket PC Phone is equipped with a camera. The lens is on the back of the device, as illustrated on page 4. You can capture photos and short videos clips using the **Camera** application, then view, manage, and manipulate them using the **Album** application, as explained in Chapter 10 of the User's Manual. You can also directly send newly-captured (or existing) files via E-mail or MMS.

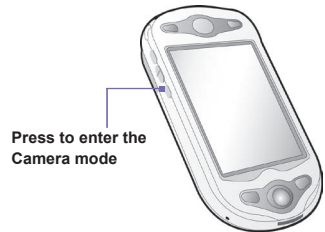
Capturing a picture or video with Camera

When in Camera mode, the screen functions as a viewfinder. To switch to Camera mode, select **Start menu > Programs > Camera**. Or, if using *Album*, tap the **Camera** icon at the bottom of the *Album* screen (shown at lower right). Or, press the **Camera** button on the left side of your Pocket PC Phone (shown at upper right).

If already in Camera mode, pressing the **Camera** button captures an image or begins capturing a video clip, depending on the current capture mode. In **Photo**, **Contact Photo**, or **Picture Theme** mode, pressing the Action button or the **Camera** button will capture a still image. In the **Video** or **MMS Video** modes, pressing the Action button or the **Camera** button will start the recording process, and pressing either of them again stops recording. After a photo or video has been captured, it will be displayed in the Review screen by default, and you can take the desired further action (keep it, delete it, send it, or switch to *Album* mode and view/manipulate it).

Using Album

Album functions as your Pocket PC's multimedia center. All of your captured photos and video clips can be viewed, as well as existing photos, videos, animated GIF, and audio files from other sources. One way to invoke *Album* is to select **Start menu > Programs > Album**. You can view/play files in Thumbnail, Detailed, Full Screen, and Slide Show modes. Chapter 10 of the User's Manual explains the many features available in *Album*, such as zooming, panning, renaming, setting as Today screen wallpaper, etc.



Press to enter the
Camera mode



Pictures and videos you capture can be viewed/manipulated using the Album application.

7. Sending your first SMS and MMS

Your Pocket PC Phone allows you to send SMS and MMS messages. Note that SMS messages can only be sent to mobile phone numbers, while MMS messages can be sent to both mobile phone numbers and E-mail addresses. Before you can send MMS messages, you need to configure the MMS network connection. For details about MMS settings, please refer to Chapter 8 of the User's Manual.

Sending an SMS (text message)

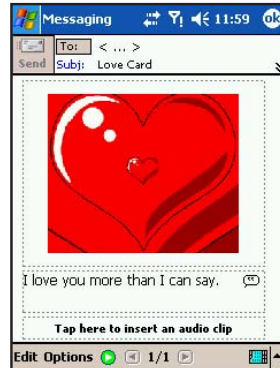
Select **Messaging** from the Start menu. Tap **Inbox** near the upper left of the screen. A “tree view” of the accounts will display. Select **Text Messages**. Then tap **New** in the lower left of the screen. In the **To** field, enter the mobile phone number of one or more recipients, separating them with a semicolon. In the **Account** field, select **Text Messages**, as shown in the example at right. Compose your message and tap the **Send** button in the upper left of the screen.



Sending an MMS (multimedia message)

With MMS, you can attach a media file to go with your text message. Select **Messaging** from the Start menu. In the *Messaging* screen, select **MMS** from the **Accounts** menu. Tap **New** in the lower left corner of the screen. Enter the recipient's phone number or e-mail address, and the Subject of the message. Follow the simple instructions on the screen to tap in the appropriate area and insert the desired photos/video clip, text, or audio clip. Tap the **Send** button near the upper left of the screen when you're ready to send your message.

The Edit Menu and Options Menu in the MMS Messaging screen offer several additional functions. For example, you can select Capture Picture or Capture Video to switch to Camera mode. After capturing the new image/video, you will be returned to the MMS Messaging screen, and the newly-captured file will be attached and ready to send via MMS immediately.



Program Icons



ActiveSync synchronizes information between your device and PC.



Calendar keeps track of your appointments and creates meeting requests.



Contacts keeps track of your friends' and colleagues' contact information.



Messaging sends and receives E-mail, SMS, and MMS messages.



Pocket Internet Explorer browses Web sites and downloads new programs and files from the Internet.



Notes creates handwritten or typed notes, drawings, and recordings.



Phone makes and receives calls, switches between calls, and sets up conference calls.



Tasks provides a convenient way to keep track of the things you need to do.



Windows Media Player plays sound or video files.



Pocket Excel lets you create, view, and edit Excel workbooks.



Pocket Word lets you create, view, and edit MS-Word documents.



MSN Messenger sends and receives instant messages.



Camera shoots photos and video clips, and even lets you place pictures into frames.



Album plays audio and video files, and provides many functions for viewing/manipulating images.



Photo Contacts lets you assign images to the entries in your Contacts (or to Groups), providing a visual Caller ID during incoming calls.



ClearVue PDF enables you to view PDF files on your Pocket PC.



ClearVue PPT allows you to view PowerPoint presentation files (.PPT) on your Pocket PC.



Fonix Voice Apps enables you to use your voice to call contacts, or to "dial" a phone number.



TrueFax sends and receives fax documents.



MIDlet Manager installs, runs, and deletes Java MIDlets.



Wireless Modem enables your device as an external modem for PC or Notebook by using a serial/USB port, or infrared.



SIM Manager collects, organizes, and sorts the Contacts list stored in your SIM card.



xBackup backs up your Pocket PC files to the ROM or an SD card.



ZIP allows you to save memory and storage capacity by creating and unzipping ZIP files.



Calculator performs basic arithmetic.



Games such as Jawbreaker and Solitaire are included.



Pictures organizes and displays image files in the JPEG format.



GPRS Monitor keeps track of GPRS connections and tallies traffic charges.



SIM Tool Kit (STK) allows you to access information and other services offered by your operator.